



Company name: PUMPA,a.s.

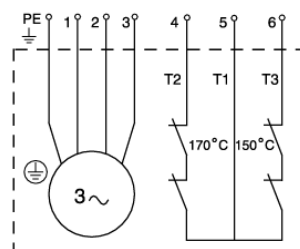
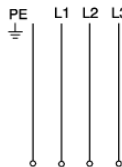
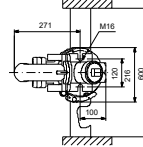
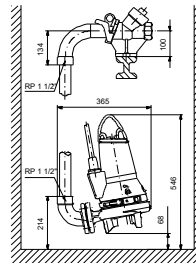
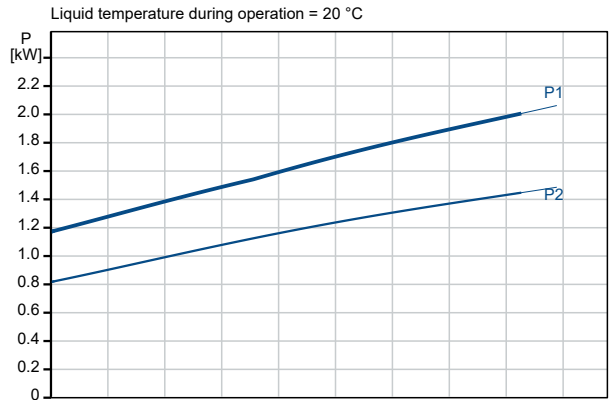
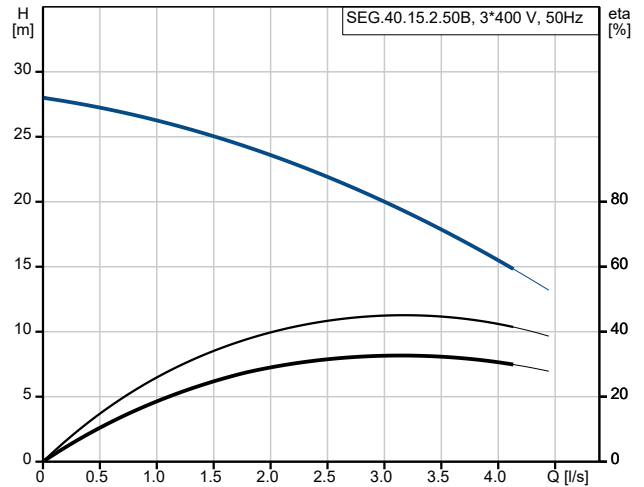
Created by:

Phone:

Email: pumpa@pumpa.cz

Date: 11/09/2025

| Description | Value |
|--------------------------------|-------------------------|
| General information: | |
| Product name: | SEG.40.15.2.50B |
| Product No: | 96075909 |
| EAN number: | 5700394850834 |
| Technical: | |
| Max. flow: | 4.17 l/s |
| Max. head: | 25.8 m |
| Type of impeller: | GRINDER SYSTEM |
| Primary shaft seal: | SIC/SIC |
| Approvals: | PA-I |
| Curve tolerance: | ISO9906:2012 3B2 |
| Materials: | |
| Pump housing: | Cast iron |
| | EN1561 EN-GJL-200 |
| Impeller: | Cast iron |
| | EN1561 EN-GJL-200 |
| Installation: | |
| Maximum ambient temperature: | 40 °C |
| Maximum operating pressure: | 6 bar |
| Flange standard: | DIN |
| Pipework connection: | DN 40/50 |
| Pump outlet: | DN 40 |
| Pressure rating: | PN 10 |
| Maximum installation depth: | 7 m |
| Inst dry/wet: | SUBMERGED |
| Auto-coupling: | 96076063 |
| Liquid: | |
| Liquid temperature range: | 0 .. 40 °C |
| Selected liquid temperature: | 20 °C |
| Density: | 998.2 kg/m ³ |
| Electrical data: | |
| Power input - P1: | 2.1 kW |
| Rated power - P2: | 1.5 kW |
| Mains frequency: | 50 Hz |
| Rated voltage: | 3 x 400-415 V |
| Voltage tolerance: | +6/-10 % |
| Max starts per hour: | 30 |
| Rated current: | 4 A |
| Starting current: | 21 A |
| Rated current at no load: | 2.2 A |
| Cos phi - power factor: | 0.87 |
| Cos phi - p.f. at 3/4 load: | 0.79 |
| Cos phi - p.f. at 1/2 load: | 0.66 |
| Rated speed: | 2700 rpm |
| Moment of inertia: | 0.004 kg m ² |
| Motor efficiency at full load: | 72 % |
| Motor efficiency at 3/4 load: | 73 % |
| Motor efficiency at 1/2 load: | 69 % |
| Number of poles: | 2 |
| Start. method: | direct-on-line |
| Enclosure class (IEC 34-5): | IP68 |
| Insulation class (IEC 85): | F |
| Explosion proof: | no |
| Built-in motor protection: | THERMAL SWITCH |
| Thermal protec: | external |
| Length of cable: | 10 m |
| Cable type: | 07RN8-F |
| Type of cable plug: | No plug |





Company name: PUMPA,a.s.

Created by:

Phone:

Email: pumpa@pumpa.cz

Date: 11/09/2025

| Description | Value |
|--------------------|--------------------------|
| Controls: | |
| Control box: | not included |
| Additional I/O: | External |
| Moisture sensor: | without moisture sensors |
| AUTOADAPT: | No |
| Others: | |
| Net weight: | 42.8 kg |
| Danish VVS No.: | 391342151 |
| Swedish RSK No.: | 5885830 |
| Finnish LVI No.: | 4836102 |
| Norwegian NRF no.: | 9045802 |
| Country of origin: | HU |
| Custom tariff no.: | 84137021 |



Company name: PUMPA,a.s.

Created by:

Phone:

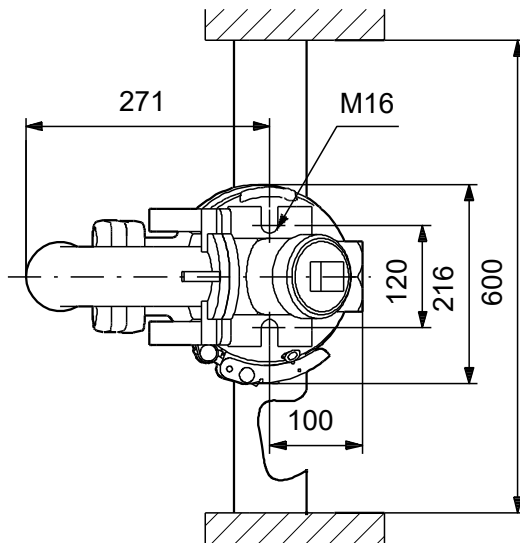
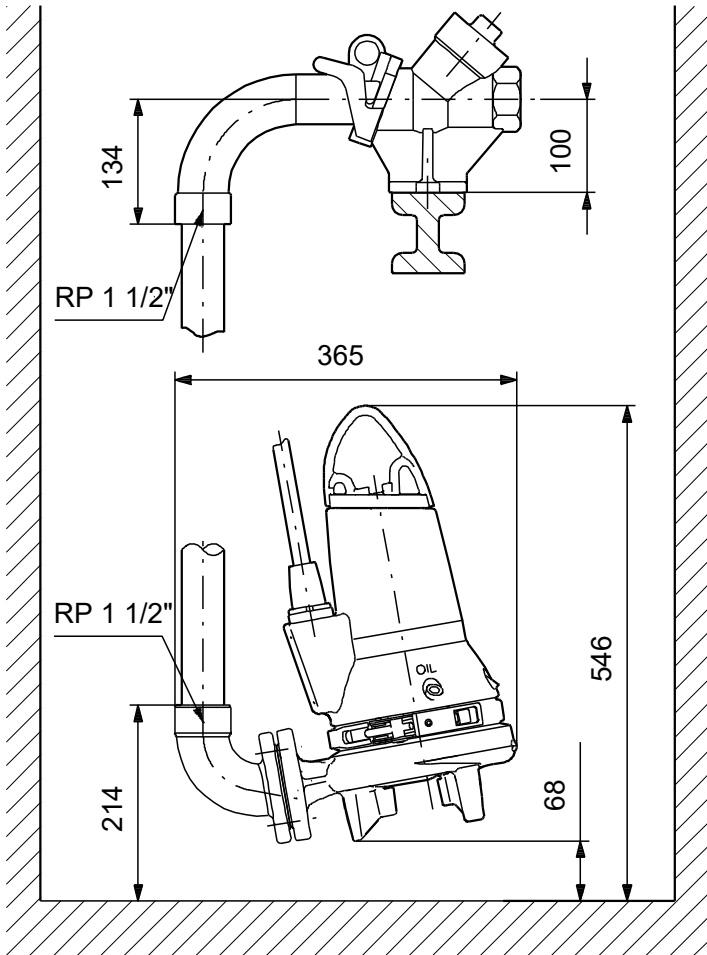
Email:

Date:

pumpa@pumpa.cz

11/09/2025

96075909 SEG.40.15.2.50B 50 Hz



Note! All units are in [mm] unless others are stated.

Disclaimer: This simplified dimensional drawing does not show all details.



Company name: PUMPA,a.s.

Created by:

Phone:

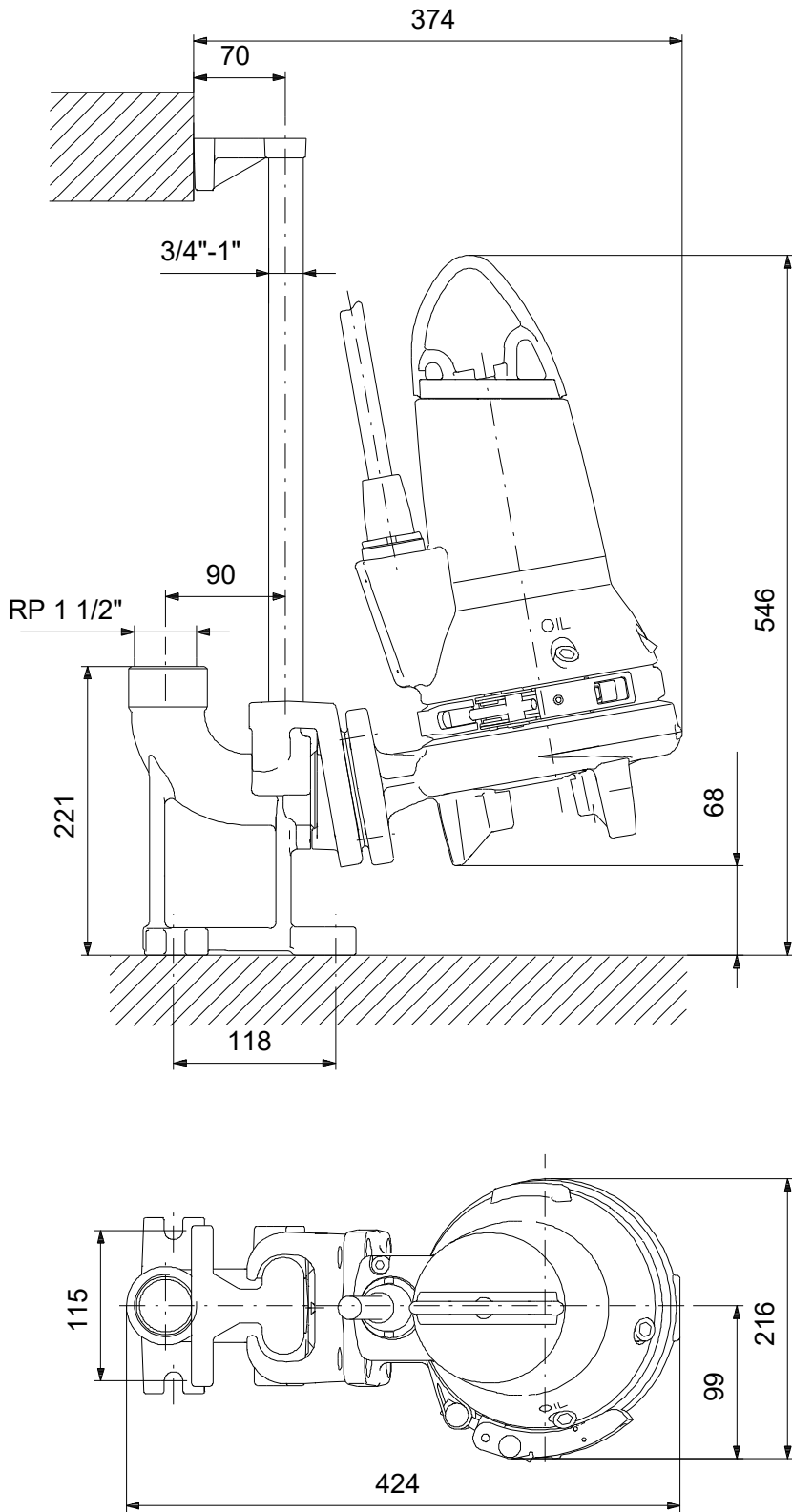
Email:

Date:

pumpa@pumpa.cz

11/09/2025

96075909 SEG.40.15.2.50B 50 Hz



Note! All units are in [mm] unless others are stated.
Disclaimer: This simplified dimensional drawing does not show all details.



Company name: PUMPA,a.s.

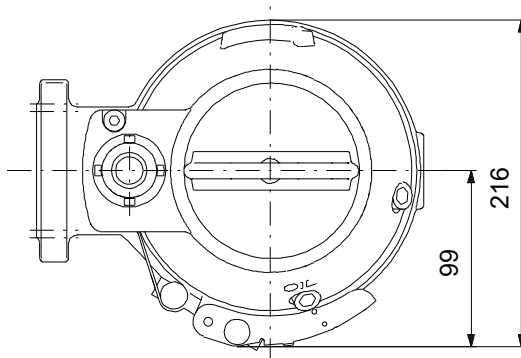
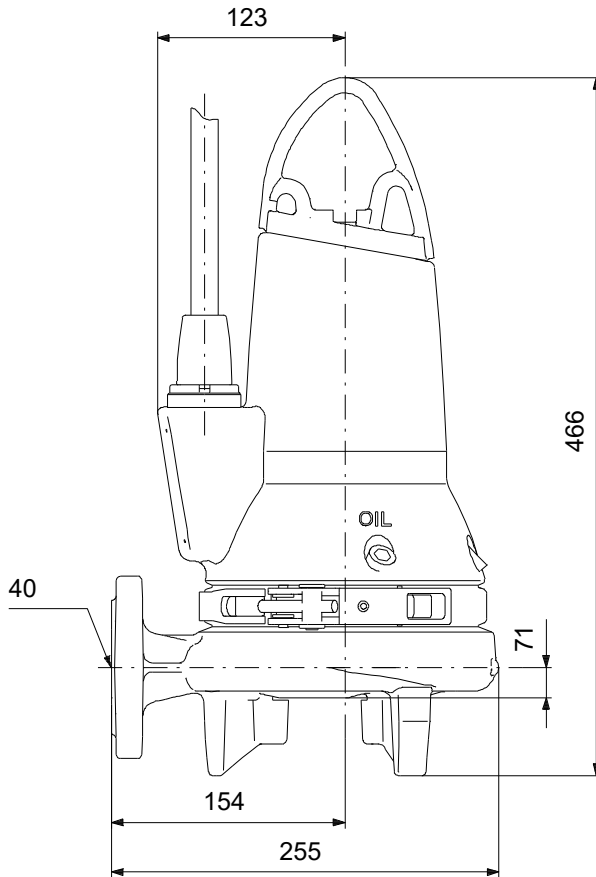
Created by:

Phone:

Email: pumpa@pumpa.cz

Date: 11/09/2025

96075909 SEG.40.15.2.50B 50 Hz



Note! All units are in [mm] unless others are stated.
Disclaimer: This simplified dimensional drawing does not show all details.



Company name: PUMPA,a.s.

Created by:

Phone:

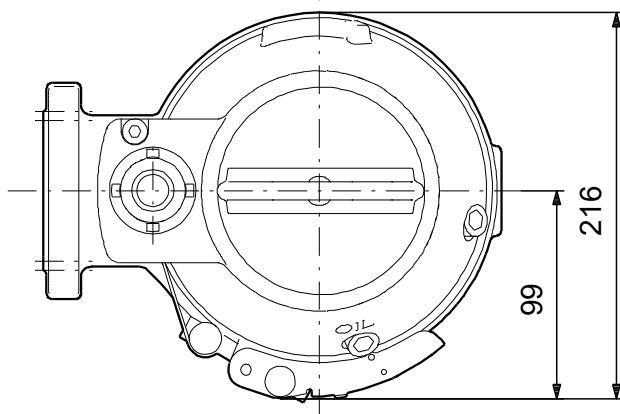
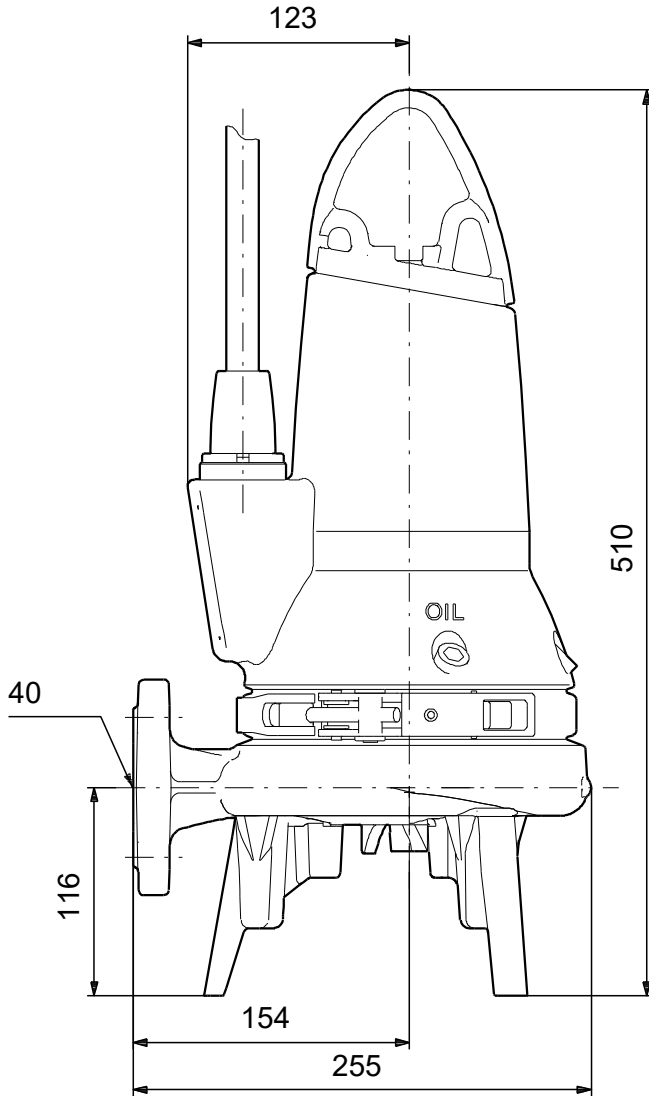
Email:

Date:

pumpa@pumpa.cz

11/09/2025

96075909 SEG.40.15.2.50B 50 Hz



Note! All units are in [mm] unless others are stated.
Disclaimer: This simplified dimensional drawing does not show all details.